

Model SL16

Legacy Series Flow Through Humidifier
(GFI #5000)

Breathe Healthier

Control Indoor Humidity.

Installing a GeneralAire® Whole House Humidifier can reduce allergy and asthma symptoms, minimize risk of infection, protect valuables (such as furniture, woodwork and musical instruments) and save you money.



How the SL16 Works:

Your furnace sends warm air through a water-soaked Vapor Pad® inside your humidifier, where it absorbs additional moisture. Newly-moistened air is then distributed throughout your home to provide healthier air for you and your family.

Details inside or go to: www.generalfilters.com/modelSL16

Install a humidifier in your home to:

Protect your family's health:

Low humidity is where viruses can thrive, causing your throat and nasal passages to dry. This leads to nose bleeds, increased risk of infection, colds, flu and other respiratory ailments. Dry air can trigger asthma and allergy symptoms. Air that's too dry causes dry/itchy/cracked skin.

Protect your valuables:

Dry air in your home can cause expensive artwork, wood flooring, cabinets, furniture and musical instruments to crack. Dry air increases annoying static shocks that can damage electronics.

Save money:

Since dry air can cause woodwork to crack, resulting gaps in windows & doors let cold outside air in. In addition, dry air feels colder. Take the chill out with an SL16. Turn your thermostat down and save money.

Model SL16

Legacy Series Flow Through Humidifier
(GFI #5000)

Why Whole-House Humidification Vs Portable Room Units?

See the top reasons below why a whole-house humidifier is a better option for your home than a portable room unit:

	GeneralAire® Model SL16 Whole House Humidifier	Portable Humidifier Units
Controls humidity in every room of your house	Yes. You will benefit from proper humidification throughout your home.	No. You'll need to purchase a unit for every room in your house.
Quiet Operation	GeneralAire® Model SL16 Whole House Humidifier	No. Portable units are noisy and take up space in your rooms.
Minimal Maintenance	GeneralAire® Model SL16 Whole House Humidifier	No. You'll need to constantly be re-filling and cleaning water pans.

Selecting a Humidifier

There are several considerations when selecting a humidifier for your home:

1. Size of your home
2. Number of HVAC systems in your home
3. Type of humidification preferred
4. Maintenance requirements
5. Age of your home
6. Your climate
7. Cost to operate
8. Home project status

We recommend speaking with a licensed contractor for assistance with your humidifier selection and installation. Use our "Find a Contractor" tool on www.generalfilters.com for a list of contractors in your area.

Ideal Humidity Levels

Research has shown that 40% to 60% relative humidity provides a comfortable environment for your woodwork, your furniture, your plants, your pets and especially you and your family.

How Much Humidity Do I Need?

Calculate the Total Cubic Feet of Home

Total Home Square Footage X Average Ceiling Height
(Include the basement)

Calculate the Load (lbs/hr)

Total Cubic Feet X Desired Condition Factor (Table Below)
X 1.05 For Each Fireplace

Calculate Gallons Per Day (GPD)

Gallons Per Day = Load (lbs/hr) X 2.88

Desired Condition Factor Table

Indoor Air Temp °F	Indoor RH%			
	35%	40%	45%	50%
68	0.00015	0.00018	0.00021	0.00024
70	0.00017	0.00020	0.00023	0.00026
72	0.00019	0.00022	0.00025	0.00028



Use the Humidification Calculator on our website to assist you in selecting the right humidifier for your home.

www.generalfilters.com/humiditycalculator

Model SL16

Legacy Series Flow Through Humidifier
(GFI #5000)

Cover Tab (Found on Both Sides at Top)

- Slightly lift bottom of tabs up / out from unit to "swing" cover open and down for easy maintenance of unit.

Cover

- Made with DuraPlast®; an ultra-violet stable automotive-grade plastic for long-lasting durability.
- Cover remains attached at bottom for easy open / close.
- Cover can be easily opened in small / tight spaces.
- No tools are required to open cover.
- User-friendly annual Vapor Pad® replacement and maintenance!

Solenoid Valve Assembly

16 1/2" High

Water Intake Valve

- Brings water into unit and to the distributor trough.

Distribution Trough

(Inside)

- Features the patented KineticFlo water distribution system.
- Ensures every square inch of the Vapor Pad® is covered for consistent evaporation throughout.

9 3/4" Deep

12" Wide

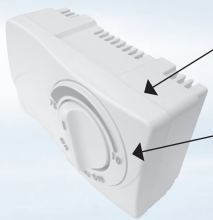
Bypass Duct

- Mount to left or right.

Left Bypass Cover

New!

MHX3C Manual Humidistat
Included with your Model SL16



Wall Mount Housing

- Allows installation in duct or on wall.

Easy-to-Use Dial

Simply turn the dial to the desired humidity level for your comfort.

Contemporary Design

Water Drain Tube

- For automatic draining of water from unit.

Maintenance


Maintenance of your new GeneralAire® SL16 Legacy Flow Through Humidifier is minimal. To ensure peak performance and reliable operation, simply change your Vapor Pad® once per year and clean mineral deposits from the water pan. A solution of 1/2 vinegar and 1/2 water is suggested. Go to www.generalfilters.com / support center / video library to watch a video demonstrating how to perform maintenance on your SL16.

Date of Installation: _____

Contractor's Contact Information:

Model SL16

Legacy Series Flow Through Humidifier
(GFI #5000)

Model SL16 Specifications		SL16 Performance Baseline Criteria				
GPD	17	Outside Design Temp	0° F (-18° C)			
Home Size	2,800 Sq. Ft.	Outside Design RH	70%			
Bypass Duct	6"; mount to left or right	Inside Design Temp	70° F (21° C)			
Type	Flow Through Vapor Pad®	Inside Design RH	30%			
Unit Dimensions	12" W x 16 1/2" H x 9 3/4" D	Ceiling Height	8'			
Plenum Opening	7 1/2" W x 8 1/4" H	Plenum Temperature	120° F (49° C)			
Operation	Water Evaporation Via Furnace Heat	Loose (.75 ACH)	800 Sq. Ft.			
Replacement Vapor Pad®	990-13 (GFI #7002)	Average (.50 ACH)	1500 Sq. Ft.			
Pallet Quantity	40	Tight (.30 ACH)	2800 Sq. Ft.			
Warranty	5 Years	<ul style="list-style-type: none"> • Test results are from cold water application • GPD shown is at 120° Plenum Temperature • Performance assumes 8 hour average furnace run time in 24-hour period. 				
		House Construction Quality				
		Series Model No.	GPD	Loose (.75ACH)	Average (.50ACH)	Tight (.30ACH)
		1042LH	17	800	1500	2800
		1099LHS	19	1175	1770	3000
		1137	18	1175	1770	3000
SL16	17	800	1500	2800		

Inside the Box:

- The SL16 Humidifier
- Warranty Card
- Installation Manual
- Vapor Pad®
- MHX3C Manual Control Wall Mount Humidistat Included
- Parts Kit
- Drain Hose
- Transformer
- Solenoid Valve



Purchase replacement parts from your local wholesaler, a licensed contractor or from our website:
www.generalfilters/part



www.generalfilters.com



Our Other Brands



Canadian General Filters, Ltd.
400 Midwest Rd.
Toronto, ON M1P3A9 Canada
Toll Free: (888) 216-9184
www.cgfproducts.com



General Filters, Inc.
43800 Grand River Avenue
Novi, Michigan 48375
Toll Free: (866) 476-5101
www.generalaire.com

Last Updated: 10-2014

Visit www.generalaire.com (Click on "Literature") to download GeneralAire® brochures, installation manuals and product guides. All information subject to change without notice.